

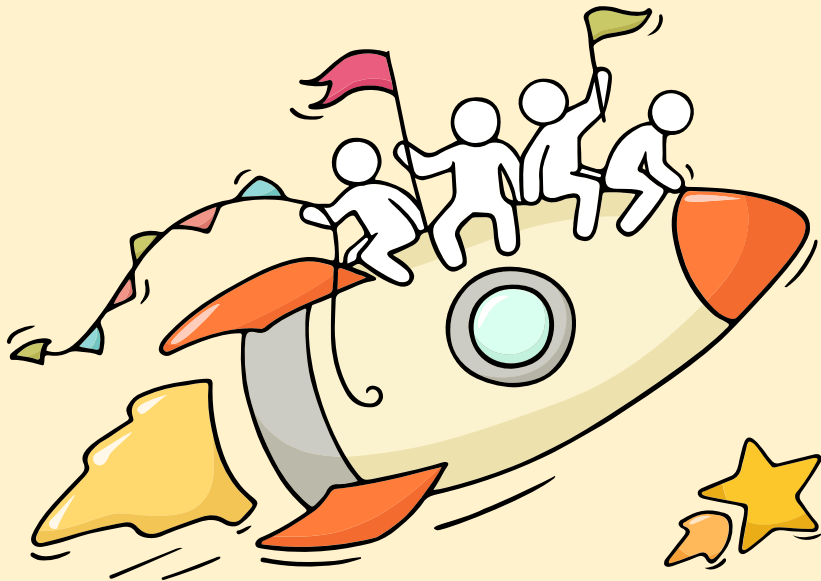
# Welcome Back!

Briefing Slides for Release of 2025 O-Level Results



# Dear students,

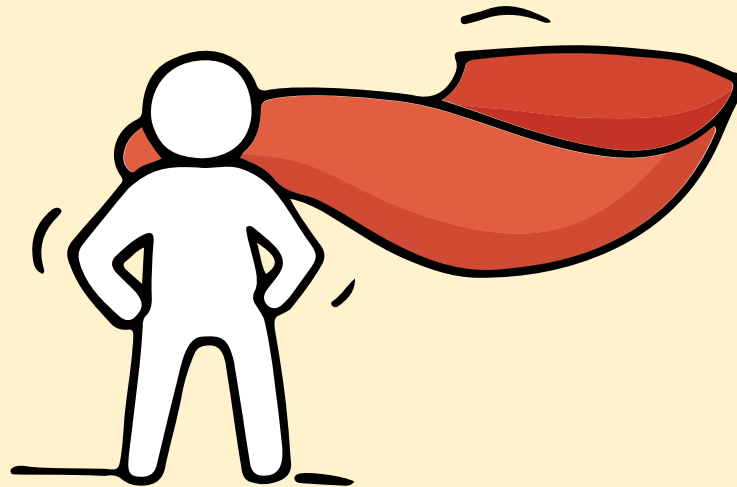
You have worked hard to reach this stage. Let's celebrate your efforts!



*Finally, we are going  
to get our results!*



Remember that while **everyone's**  
**educational journey is different,**  
**we can each have a fulfilling outcome!**



# Resources to support you as you receive your results

Receiving your results and making decisions about your post-secondary pathways can be exciting to some, but stressful to others.

Scan this QR code for an infographic with some helpful resources to support you.



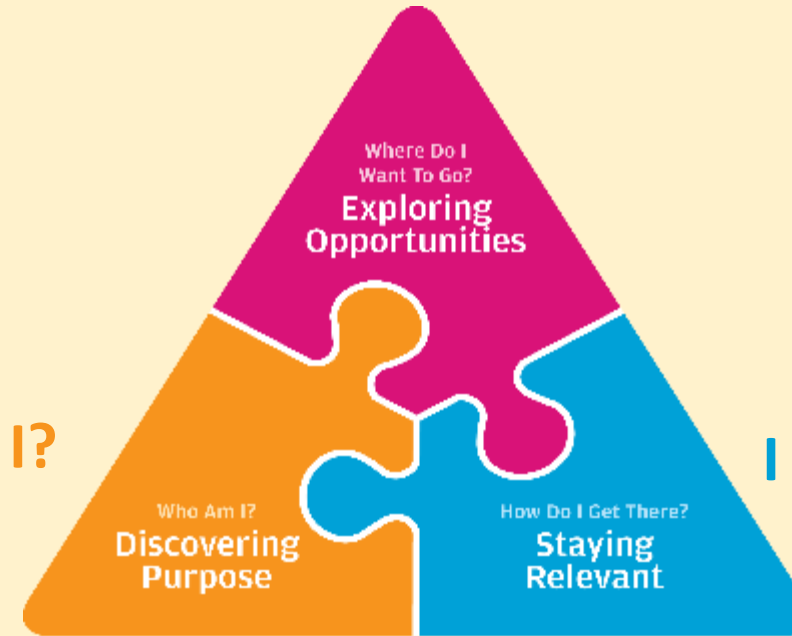
<https://go.gov.sg/2025olevelstudentresource>



# Thinking about Your Next Step?

Consider these questions...

Who am I?



How Do I Get There?

In the infographic, you can find resources which can help you make informed decisions.

## PLANNING YOUR NEXT STEP

These resources will help you chart your path ahead:



• What's Next Brochure

<https://go.gov.sg/whats-next-nlevel>



• Contact the ECG Centre @ MOE

<https://go.gov.sg/moe-ecg-centre>



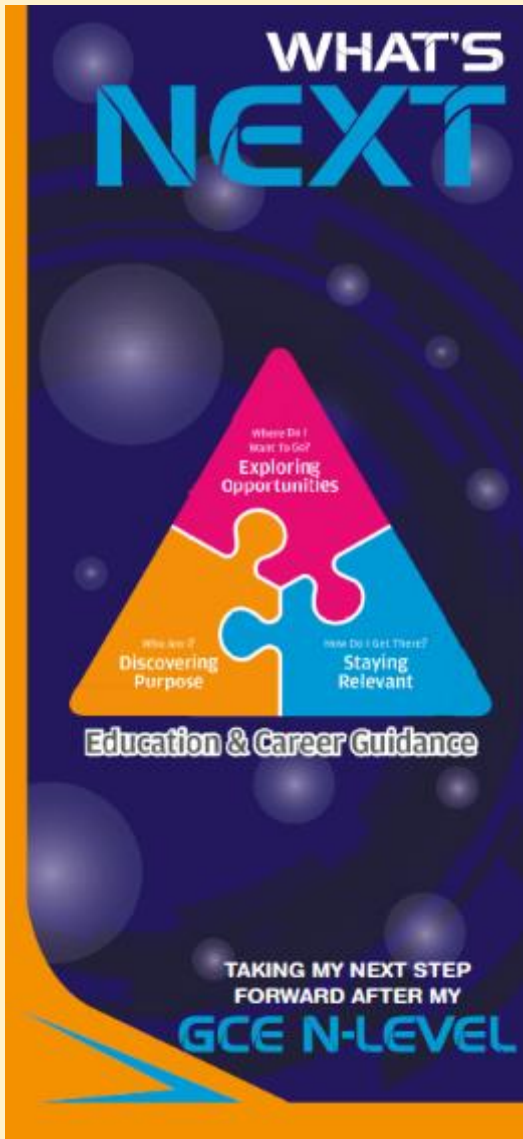
• MySkillsFuture Student Portal

<https://go.gov.sg/MySFSec>



• Chat with your school's ECG Counsellor

# Resources to help you make informed decisions



## PLANNING YOUR NEXT STEP

These resources will help you chart your path ahead:



• What's Next Brochure  
<https://go.gov.sg/whats-next-nlevel>



• Contact the ECG Centre @ MOE  
<https://go.gov.sg/moe-ecg-centre>



• MySkillsFuture Student Portal  
<https://go.gov.sg/MySFSec>



• Chat with your school's  
ECG Counsellor



## MySkillsFuture Student Portal

Use the information and tools to explore various education and career pathways and take charge of your future.

# Resources to help you make informed decisions

You can find the details of the various admissions exercises in the **Post-Secondary Admissions Exercises booklet** that can be downloaded from:

<https://www.moe.gov.sg/post-secondary/admissions>

- Polytechnic Early Admissions Exercise (Poly EAE)
- Joint Admissions Exercise (JAE)
- Direct Admissions Exercise (DAE)
- Joint Intake Exercise 'O' (JIE 'O')





# Resources to help you make informed decisions

## Post-Secondary Education

Learn more about the  
post-secondary education institutions



<https://moe.gov.sg/post-secondary/overview>



# Concerned about your next steps?

**Stop**

- Calm yourself down. Take a few deep breaths.

**Think**

- Think through the different options that are available for you.
- Remember that the O-Level examination is not the end point and is only one part of your life journey.

**Do**


- Have conversations with trusted adults who know you well to advise and guide you (parents, teachers, ECG Counsellor).
- Decide and act based on your options.

**When you receive your results, you may experience a range of emotions.**

**Managing these emotions well will allow you to stay calm and make rational decisions.**

# Reaching out for support is a sign of strength

If you have questions about your options or are not coping well, you can reach out to trusted adults such as a parent/guardian, teacher, School Counsellor or ECG Counsellor. You can also talk to a trusted friend.



*Who can we  
go to for ECG  
advice?*

Make an appointment to speak with  
your ECG Counsellor in school

**OR**

Make an ECG counselling  
appointment via the  
ECG Centre @ MOE

<https://go.gov.sg/moe-ecg-centre>

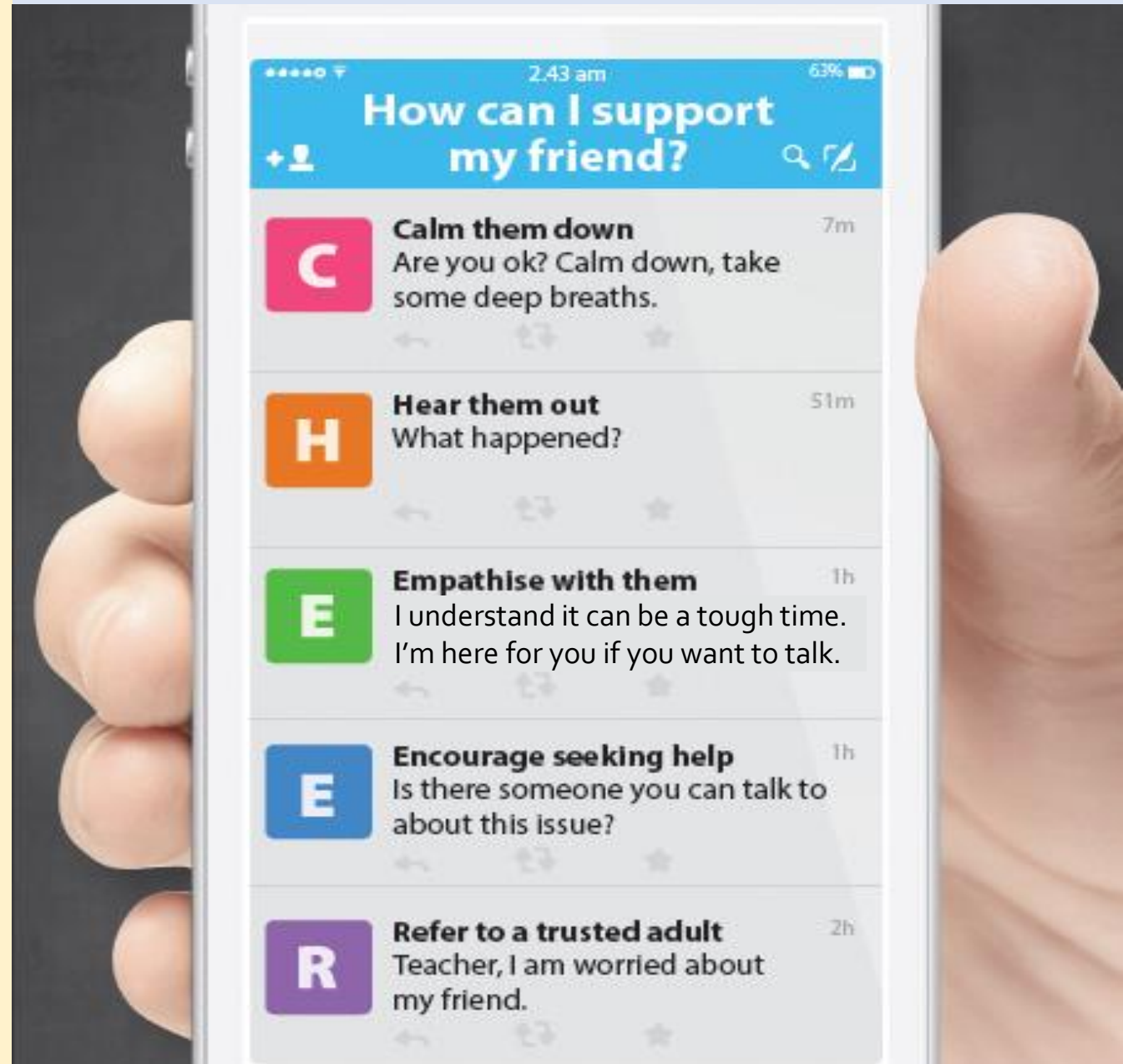


# Supporting Your Friend

- We may each experience different emotions upon receiving the results.
- You can share your friends' joy by congratulating them.
- If your friends appear to be disappointed with their results, encourage them.
- Alert a teacher if you are worried for them.



Keep a lookout for your friends in distress. You can support them in the following ways:



How can I support my friend?		
C	<b>Calm them down</b> Are you ok? Calm down, take some deep breaths.	7m
H	<b>Hear them out</b> What happened?	51m
E	<b>Empathise with them</b> I understand it can be a tough time. I'm here for you if you want to talk.	1h
E	<b>Encourage seeking help</b> Is there someone you can talk to about this issue?	1h
R	<b>Refer to a trusted adult</b> Teacher, I am worried about my friend.	2h

**Having difficult emotions during a stressful and uncertain period is normal. Keep a look out for some of these signs:**

**D  
I  
S  
T  
R  
E  
S  
S**

Deliberately avoiding others

Increased irritability, restlessness, agitation, stress and anxiety

Sending or posting moody messages on social media

Talking about death or dying

Reacting differently or gradually losing interest in things they used to like

Eating more than usual or having a much reduced appetite

Sleep pattern changes with difficulty falling asleep or oversleeping

Slowing down of energy levels

If you notice any of these signs in yourself or your friends,  
**have a chat with your School Counsellor or teacher,**

Or contact SOS 24-hour hotline at **1767** or SOS 24-hour CareText Whatsapp at **91511767**  
For cyber wellness related matters, call Help123 at **1800-612-3123\*** or email **hello@help123.sg**

\*available only from Mon to Fri (excluding Public Holidays), from 9am - 6pm.



© 2023 Guidance Branch, Student Development Curriculum Division (SDCD), Ministry of Education, Singapore. No part of this final product may be reproduced or transmitted in any form or by any means, electronic or mechanical, including photocopy, recording or any other information storage and retrieval system, without written permission from SDCC, MOE.

**Keep a lookout for  
some of these signs in  
your peers or in  
yourself**

*How can we  
support one  
another?*



# Support is readily available for you.

There are other hotlines and chats available if you are more comfortable seeking help using these platforms.

**SOS** provides round-the-clock emotional support for those in distress, thinking of suicide or affected by suicide.

Call: **1767**  
(24-hour helpline)

WhatsApp: **9151 1767**  
(24-hour Care Text)

**Carey** is an online platform by Care Corner that provides free mental health check-ins with mental health professionals. Find out more at: <https://carey.carecorner.org.sg/>

**Community Health Assessment Team (CHAT)** provides personalised and confidential mental health checks and consultation for youths. To speak with a youth support worker, you can:

Visit: **CHAT Hub at \*Scape, 2 Orchard Link, #04-01A**  
Call: **6493 6500 / 6501**  
Email: [chat@mentalhealth.sg](mailto:chat@mentalhealth.sg)

**eC2** is an e-Counselling Centre where you can talk to a trained counsellor about the issues you are facing, right where you are.

Chat with a counsellor at: [www.ec2.sg](http://www.ec2.sg)  
*Monday – Friday (Excluding Public Holidays): 10am – 12pm & 2pm – 5pm*

**Mindline** is Singapore's national mental health helpline and textline service. The service is manned by trained counsellors who are ready to listen and support you.

Call: **1771**  
(24-hour helpline)  
WhatsApp: **6669 1771**  
(24-Hour messaging service via WhatsApp)

**TOUCHline** is a helpline to provide youths with emotional support and practical advice.

Call: **1800 377 2252**  
*Monday- Friday (Excluding Public Holidays): 9am – 6pm*





**The O-Level examination is  
one milestone in your  
education journey, and  
there are many more  
exciting pathways ahead.**

**Your future holds many  
opportunities waiting to be  
discovered!**



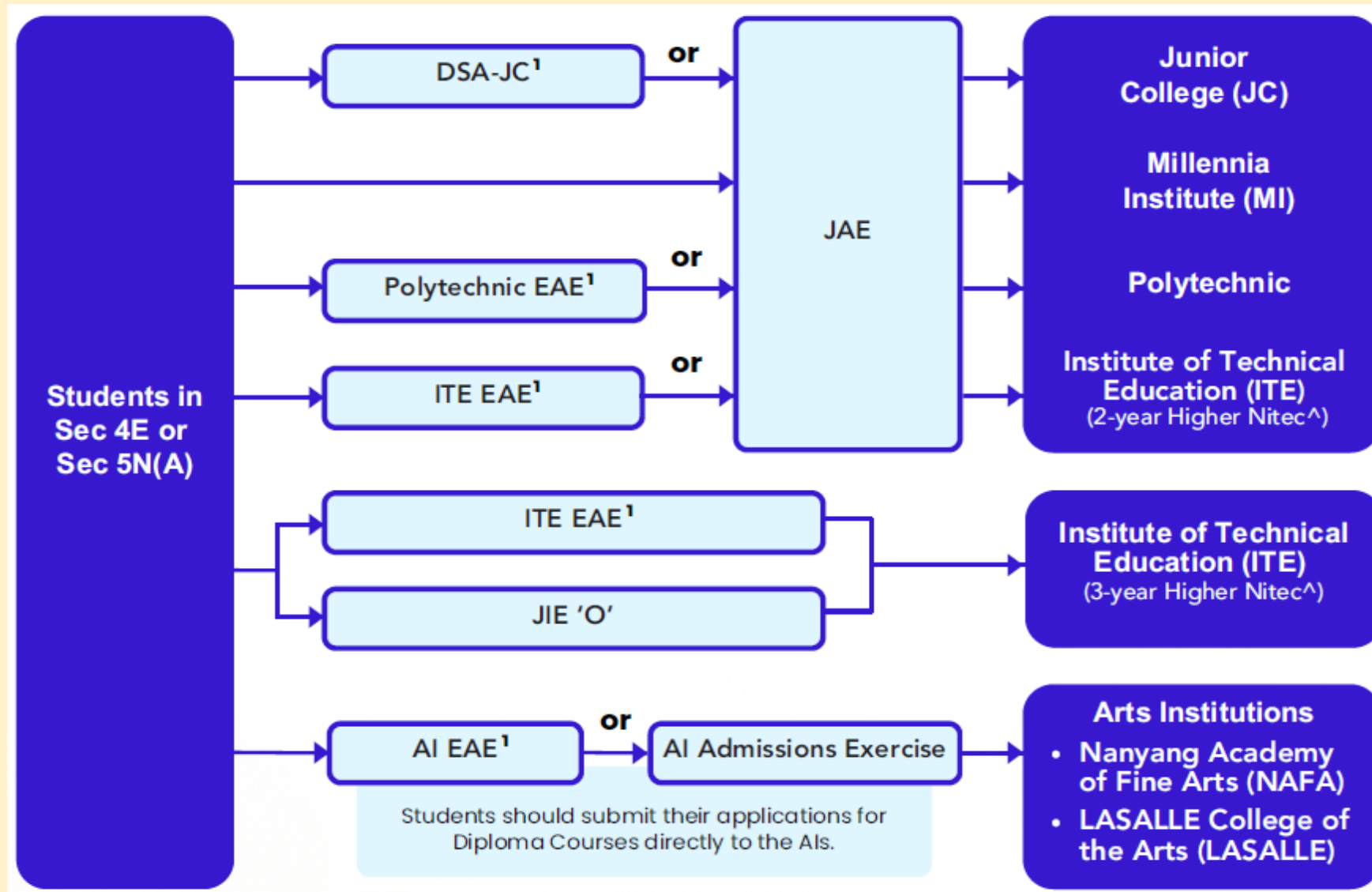
# Admissions Exercises

Things to note





# Post-Secondary Admissions Exercises for O-Level Students







Source: [A Guide to Post-Secondary Admissions Exercises](#).

^For list of courses, please visit the [ITE website](#)

Admission Exercise	Institutions	Pathway	Eligibility Criteria
<b>JAE</b>	JC	2-year A Level or IB Diploma	<b>Gross L1R5 ≤ 20</b> + Grade Requirements
	MI	3-year A Level	<b>Gross L1R4 ≤ 20</b> + Grade Requirements
	Polytechnic	3-year Diploma	<b>Net ELR2B2 ≤ 26*</b> + Min. Entry Requirements
	ITE	2-year <i>Higher Nitec</i>	Sat for at least <b>5 O Level subjects</b> over a max. of 2 years + Min. Entry Requirements
<b>JIE 'O'</b>	ITE	3-year <i>Higher Nitec</i>	Sat for at least <b>5 O Level subjects</b> + Min. Entry Requirements
<b>Arts Insti. Admission Exercise</b>	Nanyang Academy of Fine Arts (NAFA)  LASALLE College of the Arts (LASALLE)	3-year Diploma	<b>25 points in 4 GCE O Level subjects</b> excluding English (Visit websites for other admission requirements)

\*The exception is Diploma in Nursing, whereby the student's ELR2B2-C net aggregate score must not exceed 28.

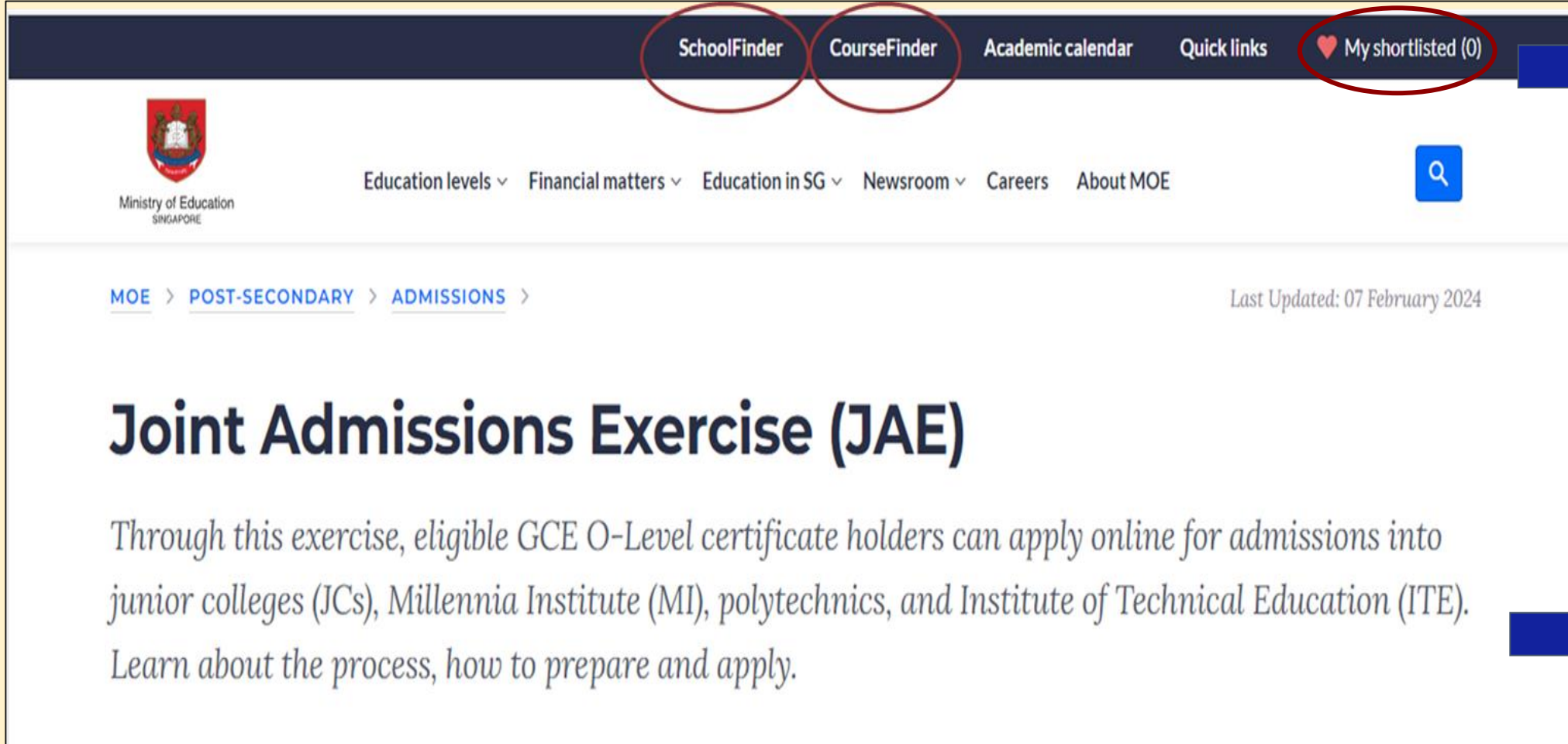
# Useful Links

Resource		Brief Description
<b>JAE website</b> <a href="http://www.moe.gov.sg/jae">www.moe.gov.sg/jae</a>		<ul style="list-style-type: none"> <li>Contains essential information on JAE including overview of JAE process and timeline</li> </ul>
<b>SchoolFinder</b> <a href="http://www.moe.gov.sg/schoolfinder">www.moe.gov.sg/schoolfinder</a>		<ul style="list-style-type: none"> <li>Find JC/MI info such as contact details, JAE aggregate score range, subjects offered, CCAs and programmes</li> <li>Interactive filters for students to shortlist schools</li> </ul>
<b>CourseFinder</b> <a href="http://www.moe.gov.sg/coursefinder">www.moe.gov.sg/coursefinder</a>		<ul style="list-style-type: none"> <li>Explore polytechnic and ITE courses based on aggregate type and area of interest</li> <li>Interactive filters for students to shortlist courses</li> </ul>
<b>Courses Offered in 2026 JAE</b> <a href="https://go.gov.sg/2026-jaecourses">go.gov.sg/2026-jaecourses</a>		<ul style="list-style-type: none"> <li>Full listing of courses offered in 2026 JAE</li> </ul>


Note: JAE Booklet was discontinued from 2023.

# JAE Application


# JAE Website



The screenshot shows the top navigation bar of the JAE website. The 'SchoolFinder' and 'CourseFinder' links are circled in red. The 'My shortlisted (0)' link, which includes a heart icon, is also circled in red. A blue arrow points from this link to a text box on the right. Below the navigation bar, the Ministry of Education Singapore logo is on the left, and a search bar is on the right. The main content area has a breadcrumb trail: 'MOE > POST-SECONDARY > ADMISSIONS >'. The title 'Joint Admissions Exercise (JAE)' is prominently displayed. Below the title, a paragraph describes the exercise: 'Through this exercise, eligible GCE O-Level certificate holders can apply online for admissions into junior colleges (JCs), Millennia Institute (MI), polytechnics, and Institute of Technical Education (ITE). Learn about the process, how to prepare and apply.' A blue arrow points from this paragraph to another text box on the right.

SchoolFinder CourseFinder Academic calendar Quick links  My shortlisted (0)

Ministry of Education SINGAPORE

Education levels ▾ Financial matters ▾ Education in SG ▾ Newsroom ▾ Careers About MOE 

[MOE](#) > [POST-SECONDARY](#) > [ADMISSIONS](#) >

Last Updated: 07 February 2024

## Joint Admissions Exercise (JAE)

Through this exercise, eligible GCE O-Level certificate holders can apply online for admissions into junior colleges (JCs), Millennia Institute (MI), polytechnics, and Institute of Technical Education (ITE). Learn about the process, how to prepare and apply.

Links to SchoolFinder and CourseFinder.

Add shortlisted courses into the My shortlisted cart.

Contains essential JAE info

Source: [go.gov.sg/applyjae](https://go.gov.sg/applyjae)

# JAE Important Dates



## Release of 'O' Level Results

- Wed, 14 Jan 2026



## JAE Application Period

- The JAE application starts at 4pm on Wed, 14 Jan 2026.
- Ends at 4.30pm on Mon, 19 Jan 2026.
- Within 6 calendar days starting from the date of result release



## Release of Posting Results

- Tue, 3 Feb 2026, 9am

## Appeal Process

- **JC/MI:** Approach school directly for details and timeline
- **Poly/ITE:** JAE Online Appeal Portal (Application from Tue, 3 Feb 2026, 9am to Fri, 6 Feb 2026, 4pm)

# JAE Important Dates



## 2026 Joint Admissions Exercise

Updated as of Sep 2025

Visit <https://www.moe.gov.sg/jae> to find out more

### GCE O-Level Results Release

**Wed to Fri, 14 to 16 Jan 2026 (tentative)**



On the afternoon when the GCE O-Level results are released, look out for an email confirming your JAE eligibility. You'll get Form A that lists your possible course options.

### JAE Application

**6 calendar days starting from the day of O-Level result release**

1. Use the [JAE worksheet](#) to rank up to 12 courses based on your preference.
2. Apply through the [JAE Internet System \(JAE-IS\)](#) with your Singpass during the application period.
3. After submitting, you'll get a verification slip emailed to you via the JAE-IS.



# JAE Important Dates

## After you apply



**Tue, 3 Feb 2026 (tentative)**

You'll receive your JAE posting results via:

- JAE-IS, to be accessed using your Singpass.
- SMS, if you've provided a local mobile number.

## Resources to check out



[SchoolFinder \(JCs and MI\)](https://www.go.gov.sg/sf-jcml)

[www.go.gov.sg/sf-jcml](https://www.go.gov.sg/sf-jcml)



[CourseFinder \(Polytechnics and ITE\)](https://www.go.gov.sg/cf)

[www.go.gov.sg/cf](https://www.go.gov.sg/cf)



[JAE worksheet](https://www.moe.gov.sg/jaeworksheet)

[www.moe.gov.sg/jaeworksheet](https://www.moe.gov.sg/jaeworksheet)



[Education & Career Guidance resources](https://www.moe.gov.sg/ecgoverview)

[www.moe.gov.sg/ecgoverview](https://www.moe.gov.sg/ecgoverview)

You can discuss your next steps by speaking with your school's ECG Counsellor or making an appointment at the ECG Centre @ MOE <https://go.gov.sg/moe-ecg-centre>.

# JAE Posting Results

- Scheduled for release on **Tuesday, 3 February 2026, 9am:**
  - SMS to the Singapore mobile phone number provided by the applicant during application
  - JAE-IS which is accessible via your Singpass (until 11.59pm on Monday, 9 February 2026)
- Acceptance of Offer

Posting to	Action to take to accept offer
JC/MI	Report on stipulated date in JAE-IS, likely the working day after release of posting results
Polytechnic	Receive enrolment package by February Complete online enrolment by stipulated date in package
ITE	Receive enrolment letter on the day of the release of posting results Accept course offer online at <a href="http://www.ite.edu.sg">www.ite.edu.sg</a> by stipulated date in letter

- Students **must accept their offer by stipulated date**, failing which, their place **will be forfeited** and made available to other eligible applicants appealing for a place in the course

# On the Day of O-Level Results Release, Students Will Receive:

1. **GCE 'O' Level Result Slip**
2. **GCE 'O' Level Certificate**
3. An **email** on JAE eligibility, to be sent on the afternoon of the day of O-Level results release
  - If student is eligible for JAE, the same email will include **Form A** (note: if student is successfully admitted to an institution through DSA or EAE, he/she is not eligible for JAE)

The image shows two documents. The top document is a 'SINGAPORE-CAMBRIDGE GENERAL CERTIFICATE OF EDUCATION ORDINARY LEVEL RESULT SLIP'. It contains fields for Year of Exam, Candidate, NRIC/Foreign Identification No, School, and Index No. The bottom document is a 'SINGAPORE-CAMBRIDGE GENERAL CERTIFICATE OF EDUCATION ORDINARY LEVEL' certificate. It is issued by the Ministry of Education, Republic of Singapore, and the University of Cambridge International Examinations. The certificate states that the candidate named below sat the Singapore-Cambridge General Certificate of Education Ordinary Level Examination and obtained the following results:

CANDIDATE	SCHOOL	YEAR OF EXAM	INDEX NO	NRIC/FOREIGN IDENTIFICATION NO.	GRADE		LANGUAGE MEDIUM	EXAMINING AUTHORITY
					Alphabetical	Numerical		
ENGLISH LANGUAGE					B	THREE	ENGLISH	CAMBRIDGE
COMBINED HUMANITIES					A	ONE	ENGLISH	CAMBRIDGE
MATHEMATICS					A	ONE	ENGLISH	CAMBRIDGE
ADDITIONAL MATHEMATICS					B	THREE	ENGLISH	CAMBRIDGE
PHYSICS					A	TWO	ENGLISH	CAMBRIDGE
CHEMISTRY					A	TWO	ENGLISH	CAMBRIDGE
HIGHER CHINESE					C	SIX	CHINESE	SINGAPORE

Number of Ordinary Level Subjects Recorded: NINE      Number of Subjects graded 6 or better: NINE

At the bottom, there are two signatures: one on the left and one on the right, which appears to be 'Alan Richard'.

# Sample of Form A



Ministry of Education  
SINGAPORE

## 20XX Joint Admissions Exercise

## Form A

000684-1111	
Name : TEST NAME	Centre Index No. : 1111111111
Address : XXX #XX - XX SINGAPORE XXXXXX	
School Code : 1111	

Please apply your course choices by **DD/MM/YYYY, XX:XX PM**.

### Your 20XX GCE O-Level Examination results:

ENGLISH LANGUAGE = A2, MALAY = B3, MATHEMATICS = C6, SCIENCE (CHEMISTRY & BIOLOGY) = B3,  
PRINCIPLES OF ACCOUNTS = B3, HUMANITIES (SOCIAL STUDIES, HISTORY) = B3, GEOGRAPHY = C5

Subject description and  
grade obtained

CCA Grade

CCA = EXCELLENT

### Your gross aggregate scores (without bonus points):

Aggregate types and gross  
aggregate scores (without  
bonus points)

JC	MI	Polytechnic				ITE		
L1R5	L1R4	ELR2B2-A	ELR2B2-B	ELR2B2-C	ELR2B2-D	ELB4-A	ELR1B3-B	ELR2B2-C
19	14	14	17	17	17	14	14	17

Source: 2026 JAE Sample Form A

# Sample of Form A

## Your eligible courses:

- You meet the entry requirements for the below courses and are eligible to apply. However, a place in the course is not guaranteed as admission is based on merit, your choices and available vacancies.
- Course codes and descriptions can be found in [www.moe.gov.sg/jaecourses](http://www.moe.gov.sg/jaecourses).

Explore JAE courses

## JC/MI:

You are eligible for all JC/MI courses.

Eligible courses

## Polytechnic/ITE:

C- Nanyang Polytechnic, N- Ngee Ann Polytechnic, R- Republic Polytechnic, S- Singapore Polytechnic, T- Temasek Polytechnic  
V- Institute of Technical Education

C27	C28	C29	C30	C31	C32	C34	C35	C36	C38	C41	C42	C43	C45	C46	C47	C49	C50	C51
C52	C54	C62	C65	C67	C69	C70	C71	C72	C73	C75	C80	C81	C85	C87	C89	C93	C94	C96
C97	C98	N11	N12	N13	N14	N15	N40	N41	N42	N43	N44	N45	N48	N50	N51	N53	N54	N55
N56	N57	N59	N60	N65	N67	N69	N71	N72	N73	N74	N81	N82	N83	N85	N91	N93	N94	N96
N97	N98	R11	R12	R13	R14	R16	R17	R18	R19	R21	R22	R24	R25	R26	R28	R32	R33	R34
R35	R36	R37	R39	R40	R42	R43	R45	R46	R47	R48	R49	R50	R52	R54	R55	R56	R57	R58
R59	R60	R61	R62	R63	R64	R65	S28	S29	S30	S31	S32	S38	S40	S42	S47	S48	S50	S53
S54	S63	S64	S66	S67	S68	S69	S70	S71	S73	S74	S75	S76	S88	S89	S90	S91	S94	S95
S98	S99	T01	T02	T04	T07	T08	T09	T10	T13	T18	T20	T22	T23	T25	T26	T28	T29	T30
T33	T35	T38	T40	T43	T45	T48	T50	T51	T53	T56	T58	T59	T60	T62	T63	T64	T65	T66
T67	T68	T69	T70	T71	V10	V11	V12	V13	V14	V15	V16	V17	V18	V19	V20	V21	V22	V23
V24	V25	V26	V27	V28	V29	V30	V31	V32	V33	V34	V35	V36	V39	V40	V42	V47	V49	V52
V53	V54	V55	V60	V61	V62	V63	V64	V65	V66	V67	V68	V69	V70	V71	V72	V73	V74	V75
V76	V77	V78	V79	V80	V81	V82	V84	V85	V87	V88	V89	V90	V91	V92	V93	V94	V96	V97
V98																		


## Note:

- You can also apply for 3-year Higher Nitec courses in the Joint Intake Exercise (JIE) conducted by ITE. Please refer to [www.ite.edu.sg](http://www.ite.edu.sg) for more information.


Source: 2026 JAE Sample Form A

# **ECG Counselling Support**


# Make an Appointment with our ECG Counsellor



Unsure about your next step?  
Your Education and Career Guidance (ECG) Counsellor  
can help you explore education options, understand  
pathways, and make informed decisions for your future.



Approach your ECG Counsellor or scan  
the QR code to book an appointment to  
explore your education and career  
opportunities.



**SCAN QR CODE:**  
Book your appointment with our  
school's Senior ECG Counsellor,  
Mdm Noormala.



# Maximising Your 12 Choices

Note that JAE and JIE 'O' are **two separate admission exercises** running in parallel.



## Passion Basket

### First 3 – 4 Choices

Consider courses that **most align** with your Values, Interests, Personality & Skills (V.I.P.S) and strengths.



## Practical Basket

### Next 4 Choices

Choose courses you are **interested in** and stand a **good chance in securing**. (where your net score is **within** the range of the last year's aggregate score).

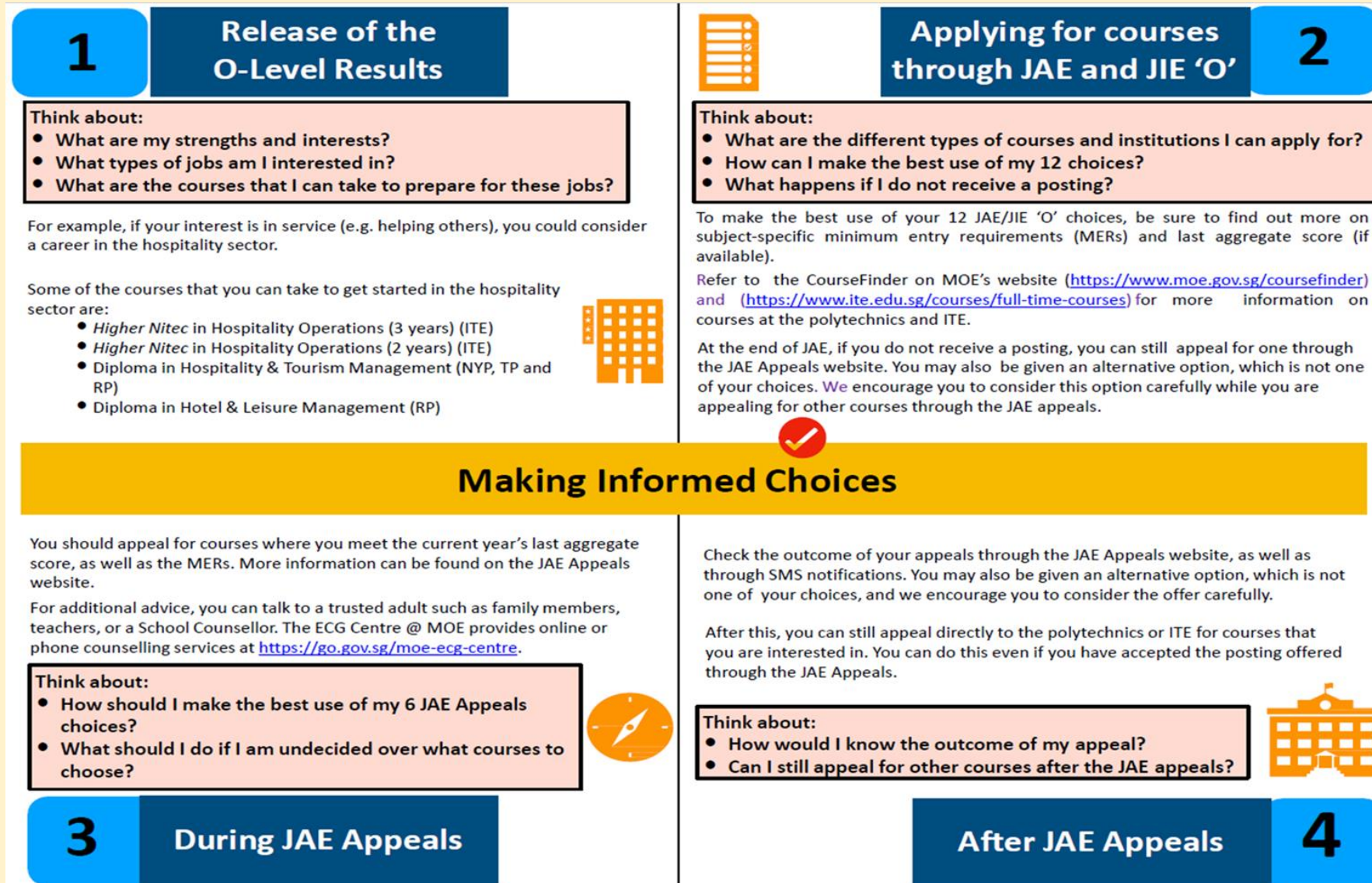


## Prudence Basket

### Last 4 Choices

Include alternative courses and institutions where the latest aggregate scores are **higher** than yours. With this, your chances of securing a place will be higher.

# Factsheet for Students



# For Students Considering Private Education



# The 3Rs when deciding on Private Education

## Reasons

- Why are you furthering your studies?
- What are the job prospects for your preferred course?

## Readiness

- How ready are you to further your studies?
- Can you cope with the academic rigour and assignment deadlines?
- Can you fund your studies?

## Risks

- Do you know the possible drawbacks?
  - Your expected returns may not exceed the investments you put into your private education.
  - Private schools may make exaggerated claims.
  - Private schools may close due to various reasons.
  - You may not get a full refund if you withdraw from your course.





# 8 Things You Should Know Before You Enrol in A Private School



## School Registration

Ensure the school is registered with SkillsFuture Singapore (SSG). Review the school's registration period, expiry date and its overall registration track record.



## Partner Institution

Research on the partner institution conferring the diploma or degree, and whether the qualification is recognised by the industry.

## EduTrust Certification Scheme

Is the school EduTrust-certified\*? Under the scheme, private schools are assessed for their performance in areas such as school management and provision of student support services.

*\*Schools are required to obtain EduTrust certification in order to offer external degree programmes*



## School Premises

Head down to the campus ground to check the facilities and support services. Observe the study environment too.



## Fee Protection

Ask if there is any course fee protection so that you will be able to recover unconsumed course fees should the school close down.



## Beyond Course fees

Find out about the course syllabus and materials, graduation rates and employment prospects. Approach the alumni to find out what they think of the school.

## Teachers

Check if the teachers are qualified to teach the course.



## Internship

If industry attachment is included, find out which organisation you will be attached to, the period of attachment and the alternative arrangement should the attachment become unavailable. Verify the information with the organisation as well.

